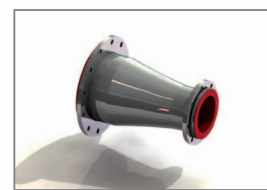
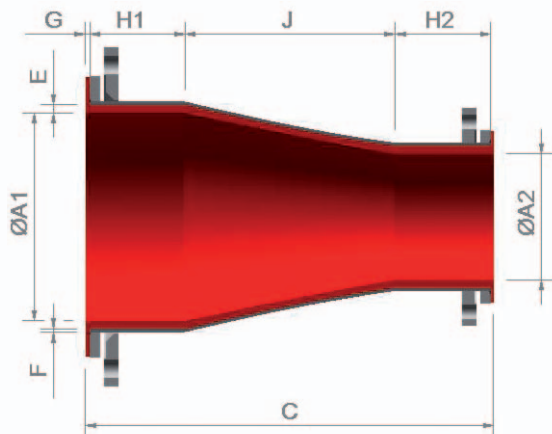


## »Partes de Isométricos

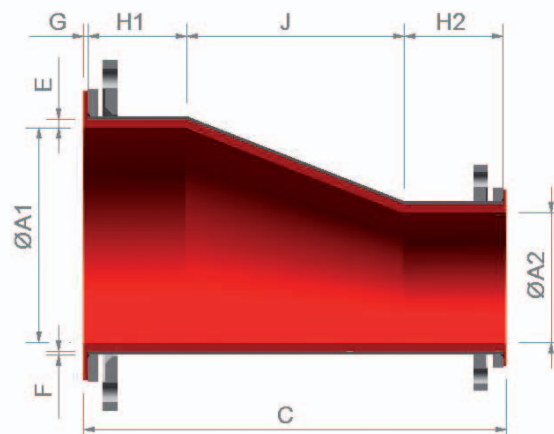
### Linha Padronizada - Reduções



Redução concêntrica



Redução excêntrica



DN Norm.	E Esp. Hev.	ØA1 Int. Rev.	ØA2 Int. Rev.	H1 Comp. reto		H2 Comp. reto		J Comp. Cone	G Espessura da junta	C Comp. total	
				Mínimo	Máximo	Mínimo	Máximo			Mínimo	Máximo
5" - 4"	9,0 - 9,0	121,3	94,3	100	500	100	500	127	4 - 4	327	1127
6" - 4"	10,5 - 9,0	146,3	94,3	100	500	100	500	140	4 - 4	340	1140
8" - 6"	10,5 - 10,5	197,1	146,3	125	500	125	500	152	5 - 4	402	1152
10" - 6"	13,0 - 10,5	247,0	197,1	125	500	125	500	178	5 - 4	428	1178
10" - 8"	13,0 - 10,5	247,0	197,1	125	500	125	500	178	5 - 5	428	1178
12" - 8"	13,0 - 10,5	294,3	197,1	125	500	125	500	203	7 - 5	453	1203
12" - 10"	13,0 - 13,0	294,3	247,0	125	500	125	500	203	7 - 5	453	1203
14" - 8"	13,0 - 10,5	326,1	197,1	150	500	150	500	330	7 - 5	630	1330
14" - 10"	13,0 - 13,0	326,1	247,0	150	500	150	500	330	7 - 5	630	1330
14" - 12"	13,0 - 13,0	326,1	294,3	150	500	150	500	330	7 - 7	630	1330
16" - 10"	13,0 - 13,0	376,9	247,0	150	500	150	500	356	7 - 5	656	1356
16" - 12"	13,0 - 13,0	376,9	294,3	150	500	150	500	356	7 - 7	656	1356
16" - 14"	13,0 - 13,0	376,9	326,1	150	500	150	500	356	7 - 7	656	1356
18" - 12"	13,0 - 13,0	427,7	294,3	150	500	150	500	381	7 - 7	681	1381
18" - 14"	13,0 - 13,0	427,7	326,1	150	500	150	500	381	7 - 7	681	1381
18" - 16"	13,0 - 13,0	427,7	376,9	150	500	150	500	381	7 - 7	681	1381
20" - 10"	14,5 - 13,0	474,5	247,0	150	500	150	500	508	7 - 5	808	1508
20" - 12"	14,5 - 13,0	474,5	294,3	150	500	150	500	508	7 - 7	808	1508
20" - 14"	14,5 - 13,0	474,5	326,1	150	500	150	500	508	7 - 7	808	1508
20" - 16"	14,5 - 13,0	474,5	376,9	150	500	150	500	508	7 - 7	808	1508
20" - 18"	14,5 - 13,0	474,5	427,7	200	500	200	500	508	7 - 7	908	1508
22" - 18"	14,5 - 13,0	525,3	427,7	200	500	200	500	508	7 - 7	908	1508
22" - 20"	14,5 - 14,5	525,3	474,5	200	500	200	500	508	7 - 7	908	1508
24" - 20"	14,5 - 14,5	576,1	474,5	200	500	200	500	508	8 - 7	908	1508
24" - 22"	14,5 - 14,5	576,1	525,3	200	500	200	500	508	8 - 7	908	1508